

# Newfoundland and Labrador Iron Ore: World Class Resources and Opportunities



铁 镍 铜 铀 银 金 铅 锌 钴 钨 钼 锑 钽

纽芬兰-拉布拉多省

CANADA

U.S.A.

**Diverse, natural-resource-based,  
export-oriented economy**

**Seven mines permitted since 2005**

**New billion-dollar investments in mines  
and processing plants**

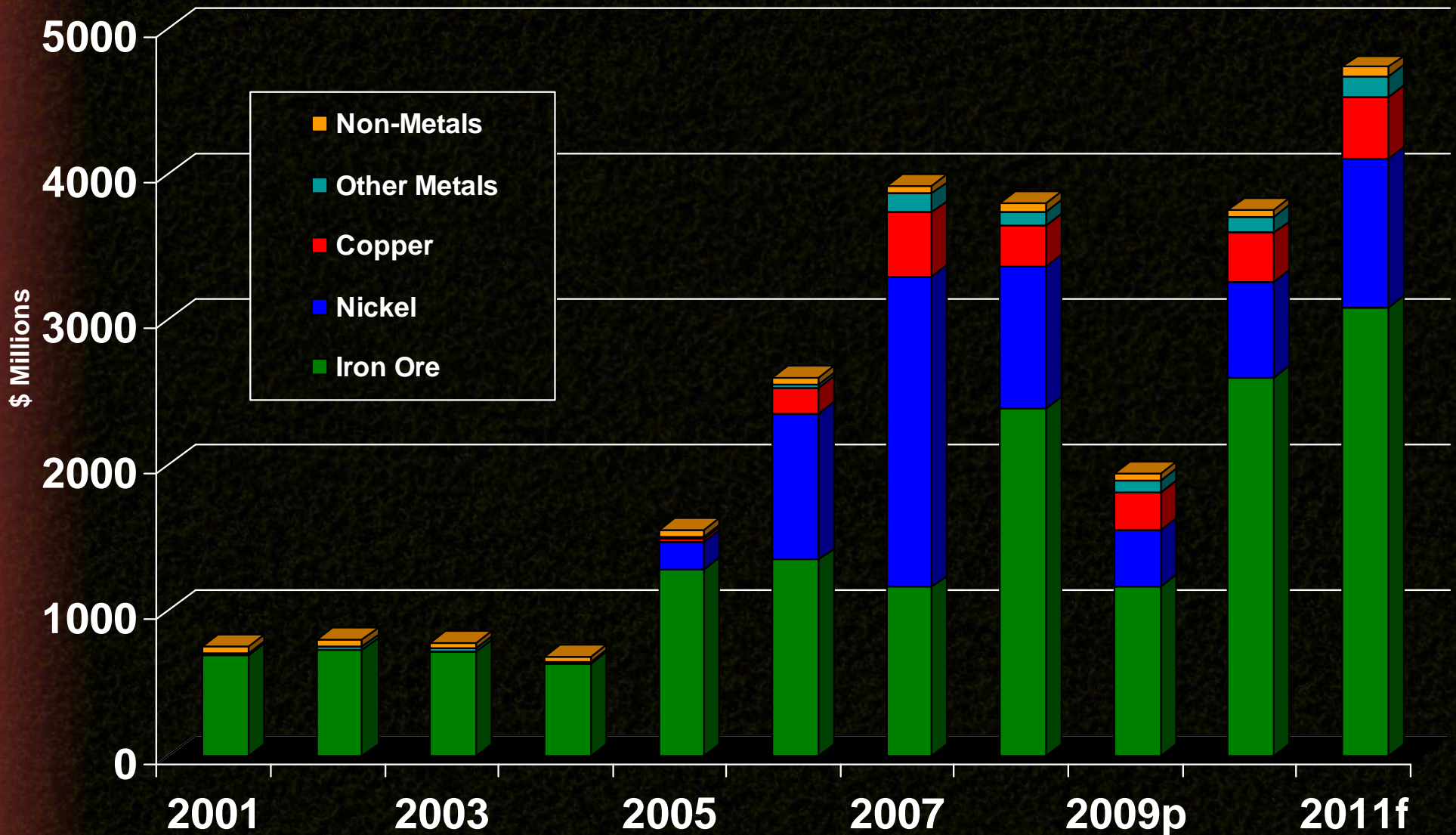
**Participation by global mining giants**

- Rio Tinto
- China Minmetals
- Cliffs Natural Resources
- Tata Steel
- Teck
- Arkema



# Gross Value of Mineral Shipments by Commodity

- \$4.70 billion in mineral shipments in 2011  
- dominated by iron ore and nickel -





**Proven record of  
discovery and  
development of  
world-class deposits**

**Examples:**

**LABRADOR TROUGH Fe**  
**VOISEY'S BAY Ni-Cu-Co**  
**BUCHANS Zn-Cu-Pb-Au-Ag**



# Foreign direct investment is welcome



**China Minmetals owns and operates the Beaver Brook antimony mine in Newfoundland**



**Tata Steel invests in New Millennium's direct shipping iron ore and taconite projects in Labrador**



**Century Iron Mines and Altius Minerals sign new agreement to explore for iron in the Labrador Trough**

# Investment opportunities are available:



- Land acquisition either through on-line staking or partnerships with Canadian companies
- Partners are available with advanced iron ore projects, for example:

*Alderon Iron Ore Corp.*

*New Millennium Iron Corp.*

*Altius Minerals Corporation*

*Labrador Iron Mines Holdings Limited*

*Century Iron Mines Corporation*

*Grand River Ironsands*

# IRON ORE: The Labrador Trough

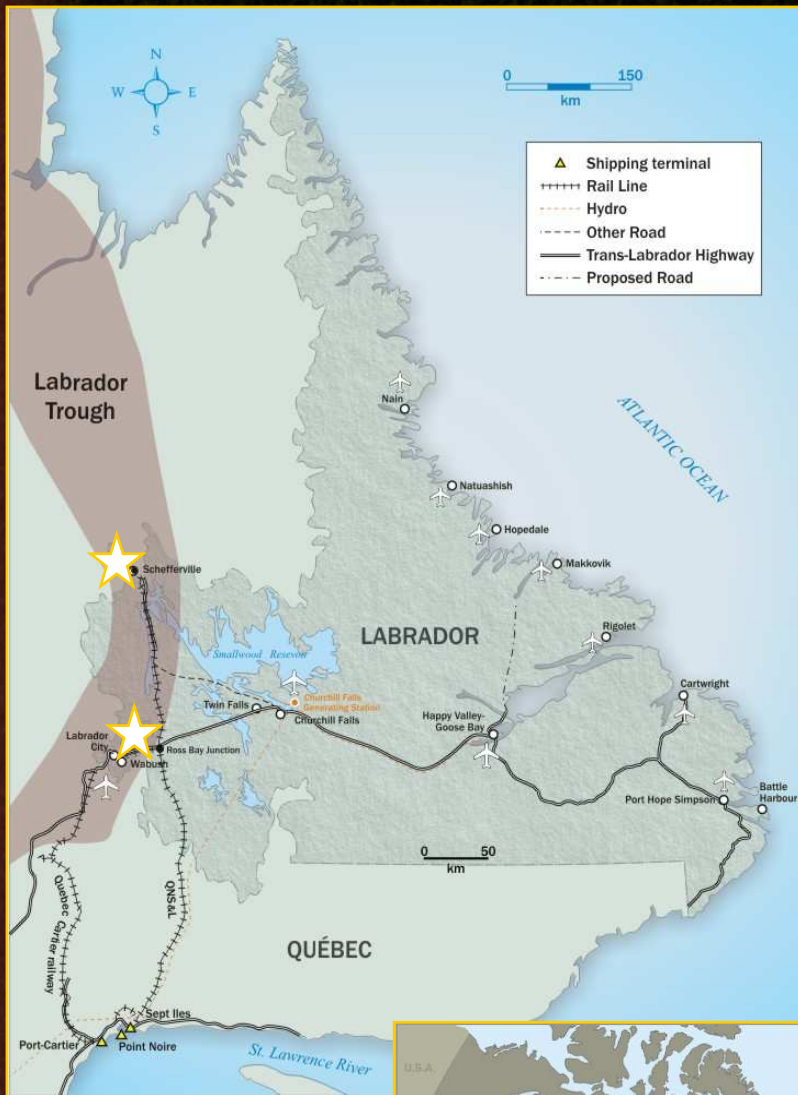
1100-km-long belt of rocks in Quebec and adjacent Western Labrador

Host to world-class deposits of Early Proterozoic iron ore

Mined continuously since 1950's

Several major open pit mines

Total production greater than 2 billion tonnes of iron ore





# IRON ORES: 3 main types



**Metamorphosed coarse-grained (specular hematite - magnetite) iron formation**



**High-grade supergene ores (hematite, goethite, limonite): weakly metamorphosed cherty iron formation**



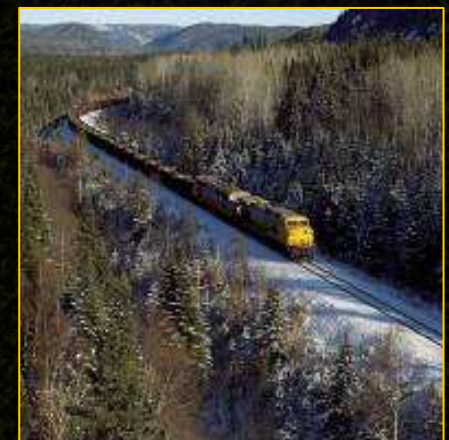
**Weakly metamorphosed magnetite iron formation or taconite**

# IRON ORE PRODUCERS

Open-pit mining operations at Labrador City and Wabush (Western Labrador)

- RIO TINTO: Iron Ore Company of Canada
- CLIFFS NATURAL RESOURCES: Wabush

World-class deposits:  
3 billion tonnes *in situ* resources



# IRON ORE PRODUCERS

**New (2011) production from open-pit mining operations in Schefferville area (Western Labrador)**

## LABRADOR IRON MINES

**Direct shipping ores (DSO)**

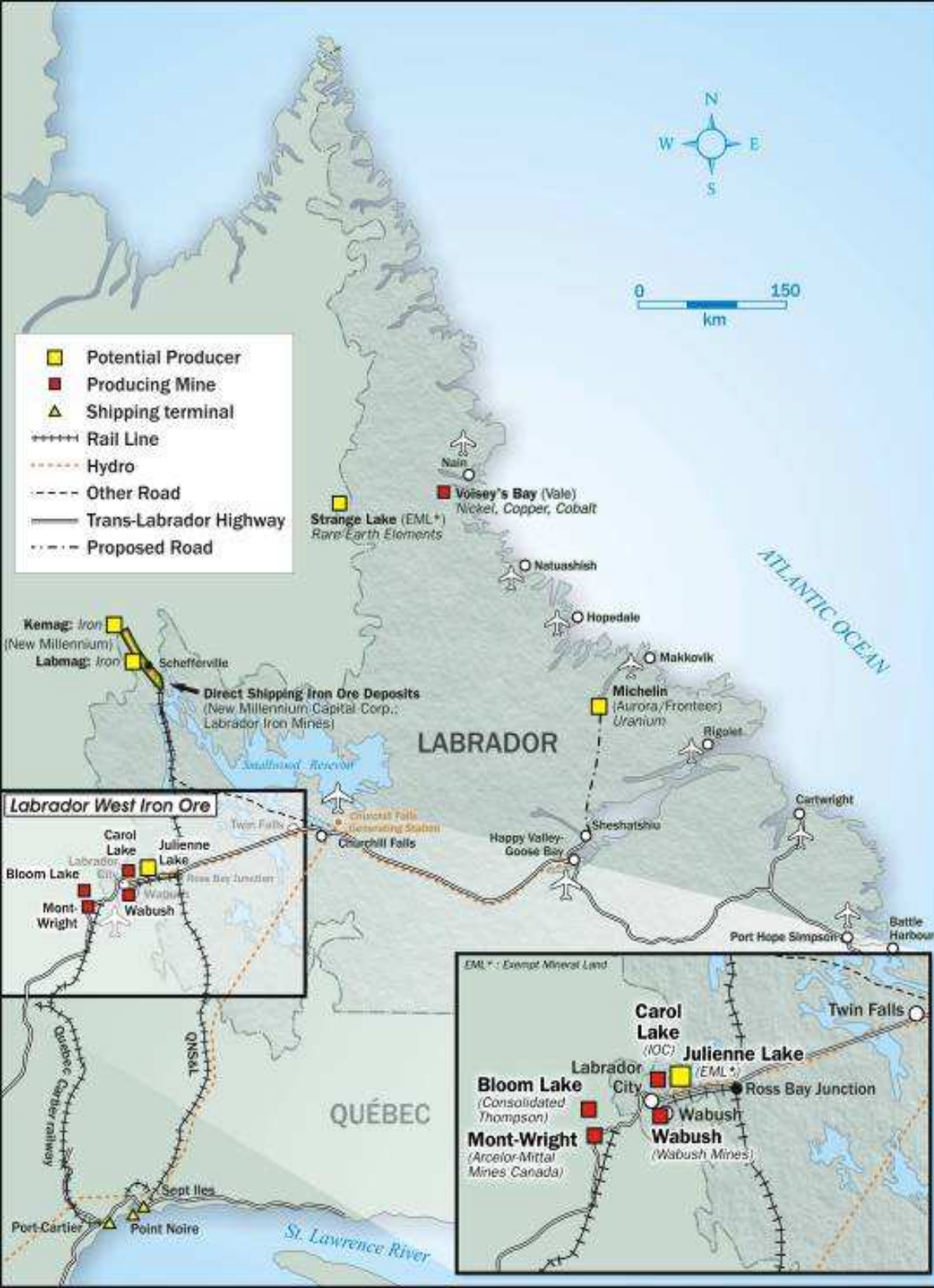
**The first shipment of LIM iron ore sailed last month (October), bound for China**



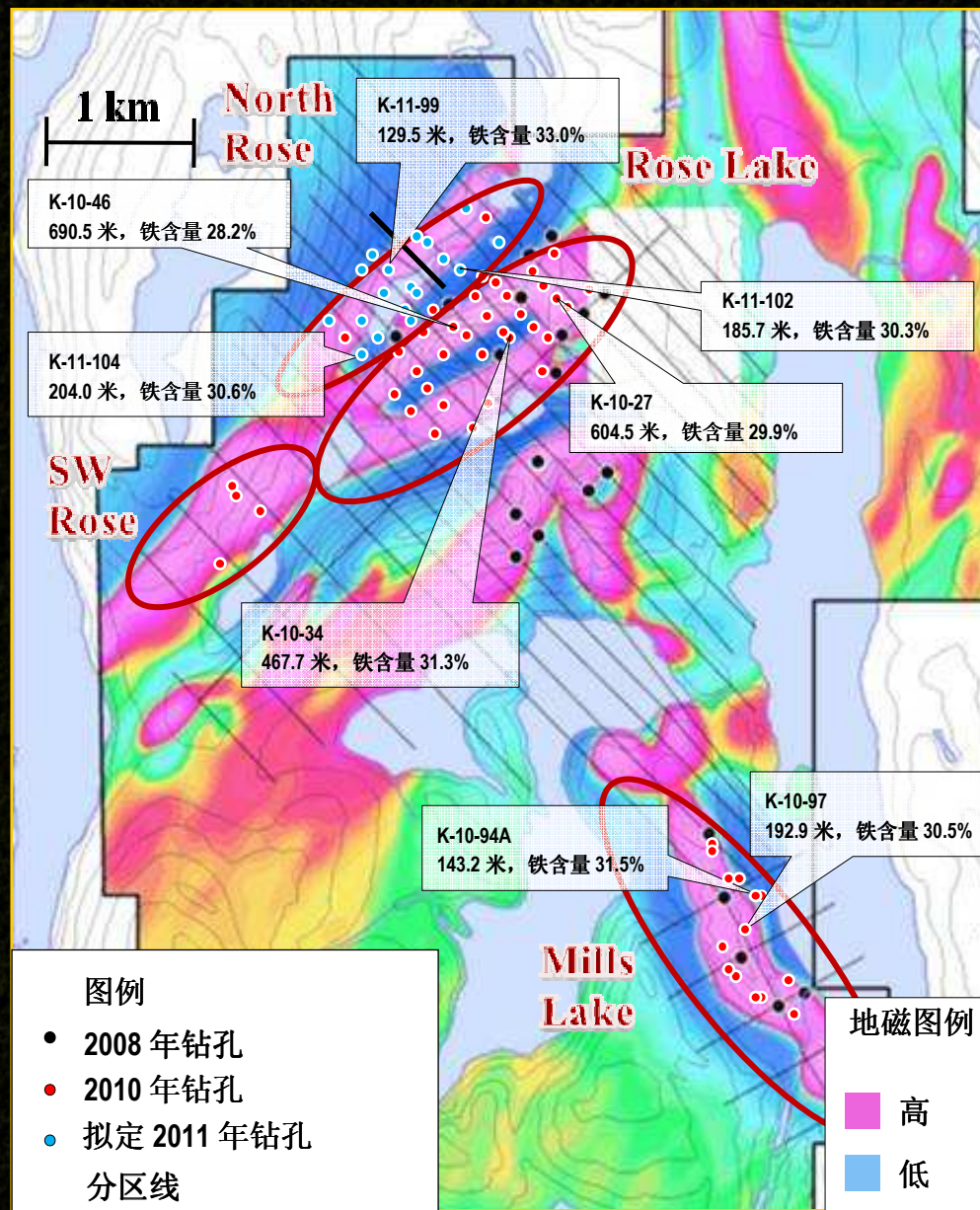
# IRON ORE: WESTERN LABRADOR

Significant opportunities  
for future development and  
investment

- New Millennium Iron Corp.
- Labrador Iron Mines Holdings Ltd.
- Alderon Iron Ore Corp.
- Altius Resources Inc.
- Century Iron Ore
- Cap-Ex Ventures Ltd.
- Julienne Lake (Government of NL)

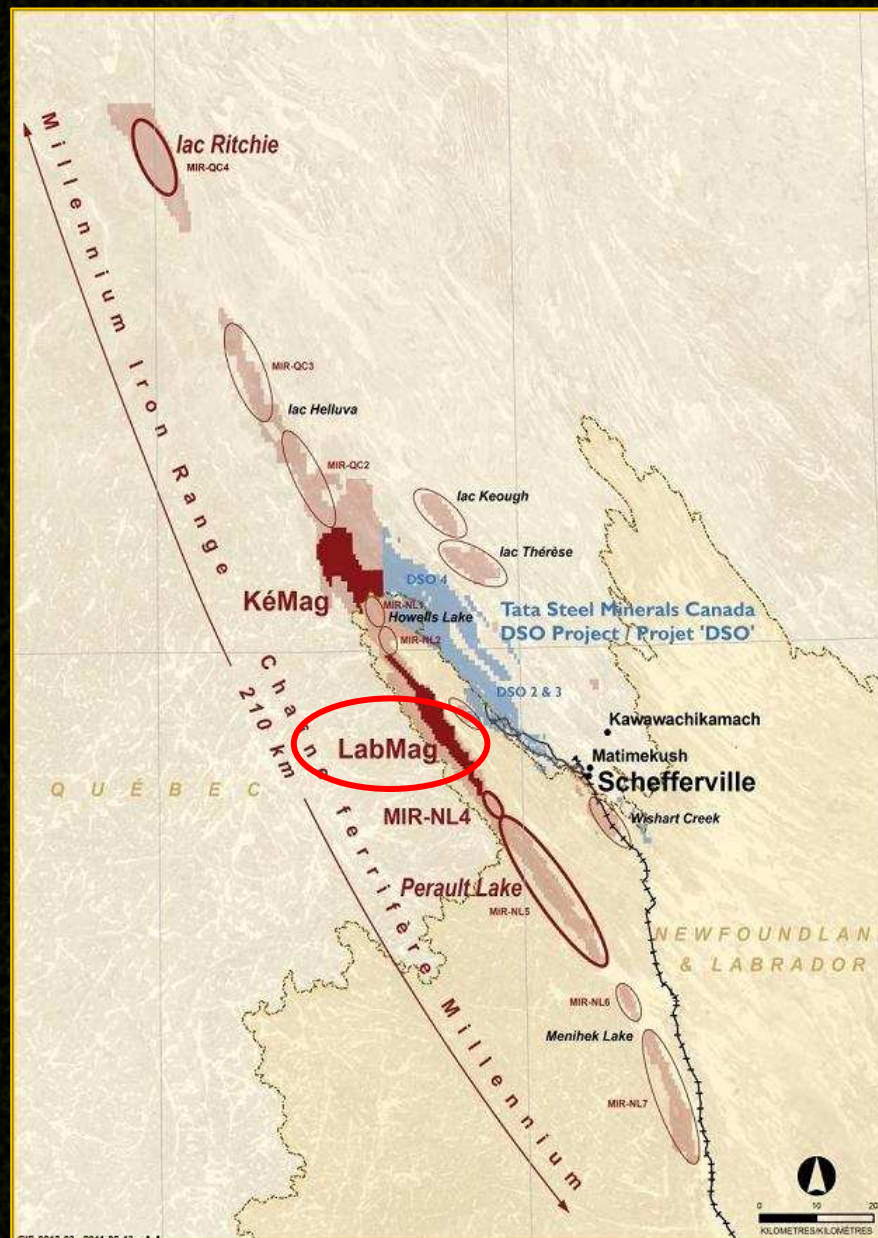
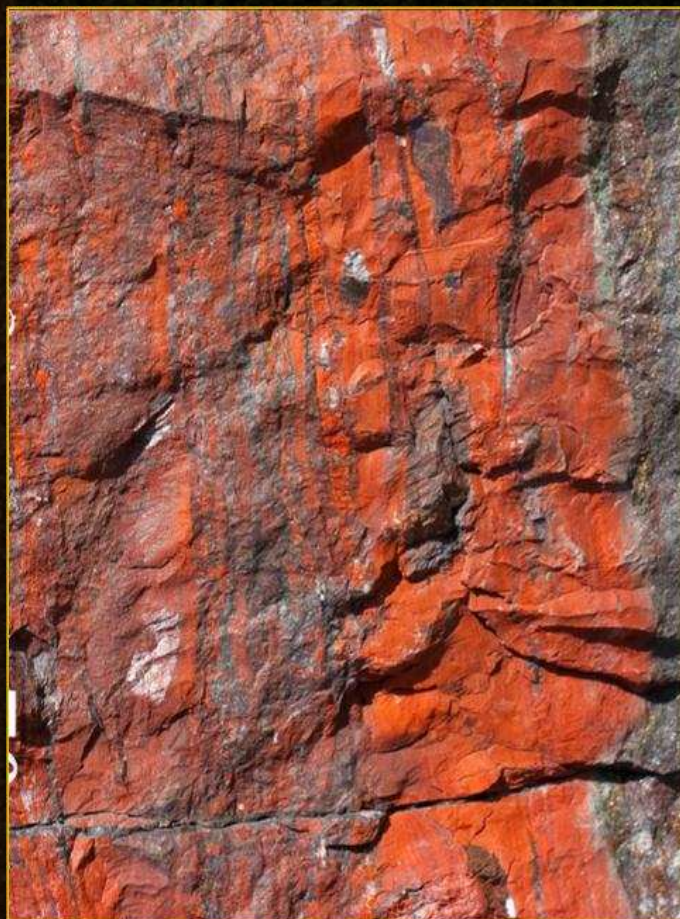


## ALDERON IRON ORE CORP: KAMI DEPOSIT



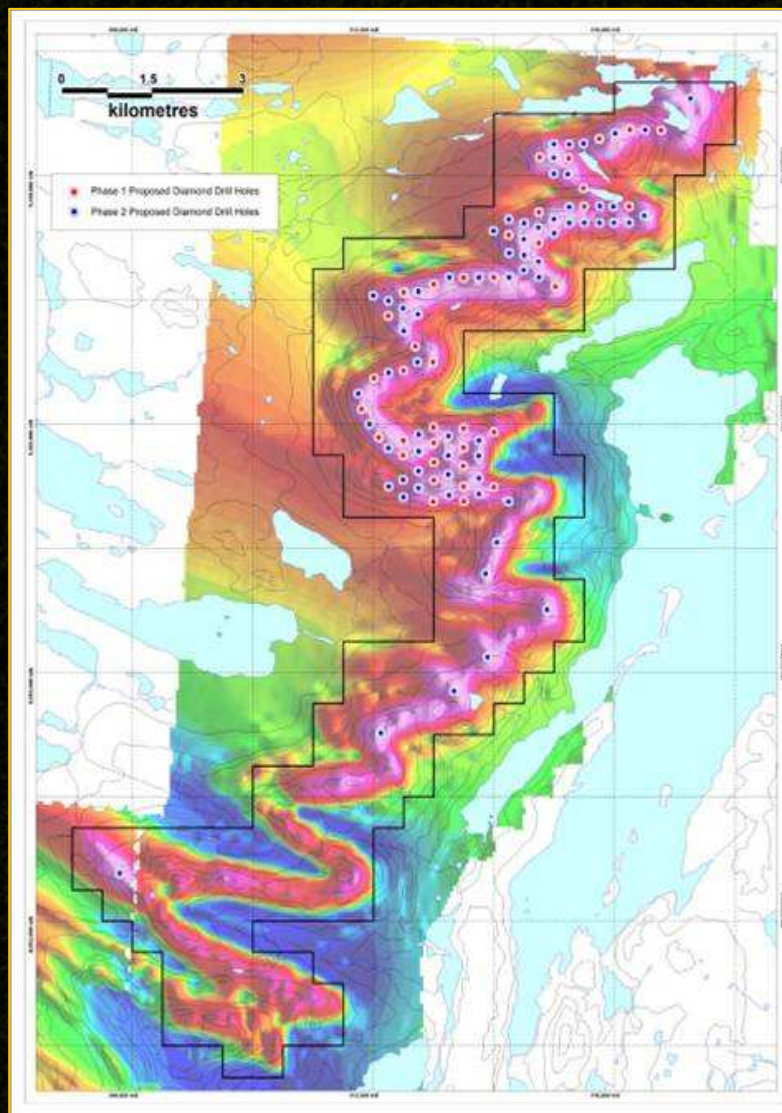
# IRON ORE: WESTERN LABRADOR

## NEW MILLENNIUM IRON: LABMAG Project



# IRON ORE: WESTERN LABRADOR

## ALTIUS MINERALS CORPORATION: SNELGROVE LAKE



# IRON ORE: WESTERN LABRADOR

## GOVERNMENT OF NEWFOUNDLAND and LABRADOR: JULIENNE LAKE



# IRON ORE: EASTERN LABRADOR

Significant opportunities  
for future development and  
investment

## GRAND RIVER IRONSANDS







**VISIT US AT BOOTH 3403 in the  
EXHIBITION**

and at the **CANADA MINERAL INVESTMENT FORUM: November 10; St. Regis Beijing**